



inspiring a beautiful life

Interiors Trend Report

www.zohiinteriors.com.au



What drives interiors trends?

We are all so busy and it seems that life is getting more complex by the day! If you think you're alone, you absolutely are not. The "technology revolution" and the constant push to have more and more and be more and more is exhausting, right!?

In order to counteract these pressures our natural impulse is to seek balance. Without even realising it, we look for tranquillity and simplicity wherever we can find it. There are underlying and invisible forces influencing our choices in every arena and on a mass scale. And home furnishings are no exception. Themes such as minimalism, 'wabi-sabi', Marie Kondo's "spark joy" success and the 'slow' movement are good examples of how many of us are leaning into living with more soul, connection and groundedness.

In this day and age there is such an abundance of beautiful homewares and building materials, that just about any colour palette or style can be made to look gorgeous and up to date with a 'chic' edge. Nonetheless, when it comes to interiors, 2019 sees even more natural elements than 2018 – natural colours, natural textures and natural motifs. We can only prosper by finding harmony with the world we live in and so organic ideals are finding prominence in the design trends of 2019 in the form of shapes, colours, fabrics, decorator items.

Warm tones and natural materials have moved to the foreground in home decor fashion. Although the year started out with Pantone's Coral Living Colour of the Year, which is quite fresh and lively, the broader palette for the year is certainly more muted and earthy. Every colour is finding a muted version of itself in the line-up.

What drives interiors trends?

Deep, rich colours will find their place in 2019 because people are looking for soul and substance. Clinical and stark whites and greys are on their way out and are being replaced gradually with softer, more soothing neutrals in the brown range. 2018's Colour of the Year, Greenery is here to stay for a while yet and in fact extends its influence via all manner of greens (and actual greenery!) into 2019.

For flooring, wood and terrazzo have made a comeback, both being natural substances that look and feel great. They are both unfussy, sensual and easy to look after which fits with the psychological and practical requirements we need to meet fill in our living spaces.

Including greenery in the form of artwork or decor items like landscape paintings, palm leaf motifs, flora and fauna figurines and indoor plants are continuing trends. There is such a plethora of fun and satisfying ways of inviting nature to your home!

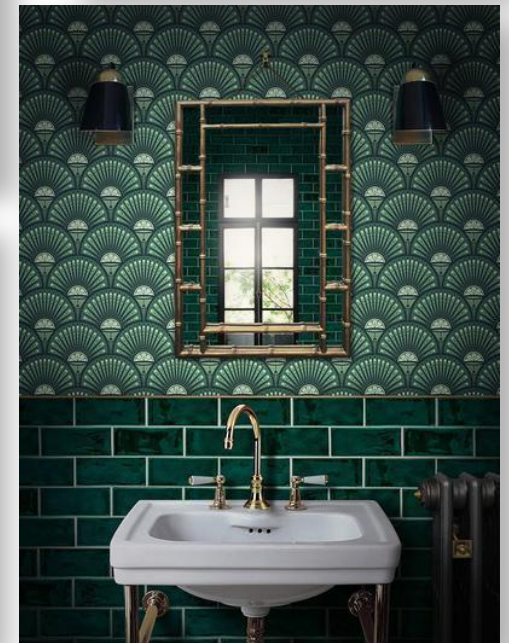
As for furniture, again think 'natural'. Wood and leather emanate cosiness and warmth so expect to see more cowhide, raw timbers, rattan and cane. Cognac is a leather colourway that reflects the colour trends in 2019. In soft furnishings, a sensual and comforting tactile experience is achieved through velvets, furs, hides, cotton and linen.

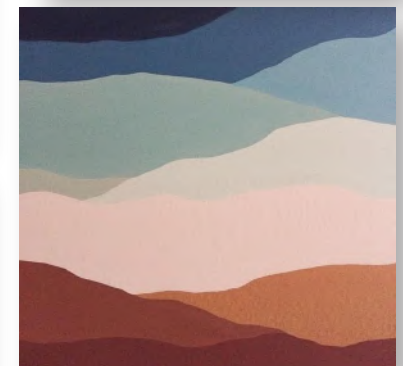
What drives interiors trends?

Wallpaper is making a comeback! And there are lots of fabulous patterns coming out including geometric patterns, tropical motifs and landscapes. The wabi-sabi trend is all about celebrating the beauty of imperfection and now this theme is being reflected in wallpapers in the form of photo images of textural finishes, raw and distressed effects, plants and other natural scenes.

When it comes to furnishings, choose casual Bohemian, Tropical, Plantation and Tribal styles this year. Use them as an influence rather than being too literal for the most stylish and contemporary look. For those of you that like a bolder aesthetic, use patterns and motifs inspired by Meso-American and Tex-Mex cultures in your cushions, drapes, and rugs.

Artisan and exotic cultures such as Morocco, Africa more generally and India continue to contribute to the interior's scene with lots of fabulous reclaimed or vintage furniture and homewares, beautiful inlay items, handmade Handiras and rugs and metal, pottery and textile homewares. In 2019 there is certainly scope to be creative and to mix and match styles in eclectic ways and to make any colour scheme work in a fresh and luxe way.





Living Coral

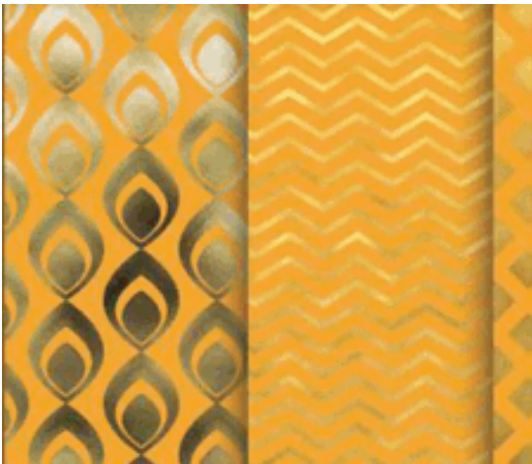


Living Coral is a rush of colour that you can use in a variety of ways. This luscious and uplifting shade reminds of dusk when the sun sets splashing orange hues across the sky.

Energise yourself and breathe life in your home with Living Coral. A totally different shade from the earthy hues of the trending colour list of 2019, yet it is closely associated with the fun side of nature.

Match the colour with nude paint, rustic textiles, fresh flowers, and neutral accessories to highlight the beauty of the lively coral shade. It also looks great with lots of plants and natural elements such as baskets, rattan and leather.

Mustard



Neither as bright as yellow or as subdued as beige, mustard yellow has the right notes of stimulation and energy without being overpowering or brash. Although not technically a neutral shade, it can be used as a core element of an interiors scheme and harmonises with a range of other colours.

Mustard yellow can brighten up any space and has quickly found its way into all types of fashion including homewares and clothing.

This smooth, warm colour can be easily incorporated into any type of furnishings, cushions or wall paint.

Sea Pink



A soft pastel shade usually used in garments is now making its appearance in home interiors. Shades of soft blush, pink and lilac are elegant and cool yet un-clinical. It can be used as a hero or in a subtle way and looks perfect with other muted shades of 2019.

If contrasted with a darker shade of purple, Sea Pink or Lilac can make bedrooms look romantic and magical. It is an ideal colour for light and airy spaces adding to the sense of freshness and optimism.

Sea Pink and close relatives are sure to become favourites in 2019 colour palette.

Caramel



Caramel is delicious just like it's sugary namesake. Homely and earthy, its associations with smooth, pleasurable sensations makes it a comforting colour in décor.

It teams well with many shades including off-white oranges, browns, yellows and more. It suits bohemian, mid-century modern, contemporary and eclectic room settings especially well.

With this inviting shade you can achieve a sophisticated interior effortlessly and also have the liberty to play around with the home's decor.



Spiced Honey



This is amber-toned, warm shade is another comforting and energising colour. With the right lighting, it can create an inviting ambiance to any room.

Spiced Honey reflects an organic and earthy vibe. It has the versatility to be utilised in a range of interior styles with ease. Use it on walls and floors as well as furniture and homewares.

Mayfly



A dark olive look-alike, Mayfly is a warmer shade from the green family. Use this shade for accents in velvet fabrics, rugs or flower vases for a touch of elegance.

Painting the home with a shade of green resonates the essence of nature and freshness that comes along with it. Hang frames containing pictures of people or flora and fauna against a Mayfly backdrop.



Rust



The colour which bears a close affinity with terracotta, is all about warmth and mystery. A home painted in a shade of rust shade can become a place of positivity and vitality.

Use the shade in patterns, prints or textures to bring out its versatile nature. There is a lot of creative scope with his shade. The colour can help you achieve a cosy and rustic feel or a look of drama and elegance.

Teal



We adore all shades of Teal, Aqua and Sea Greens at Zohi Interiors whether its on the Year's Hit List or not!

Echoing shades of water and deep forests, Teal is refreshing and easy to live with yet has substance and gravitas when required. You can play with teal in endless ways and its never tiring. Change up the mood, break monotony and settles the home into an ambience of calmness with teal. The colour looks great just about any other colour. Grey, Ecru, White are all great!

Dusty Pink



A colour to drool over, dusty pink is quintessentially romantic, soft, and breezy. This extremely light shade needs body in the form of bold furniture or home decor accessories to make it stand out. Alone Dusty Pink can look washed out. Draw inspiration from modern patterns and floral motifs and imprint them on this pastel shade to enhance its beauty.

This muted pastel shade can reach heights of aestheticism whether used in a scanty proportion as a couch or much wider application like a wall. Use metal furniture to achieve a contemporary décor.

zohi interiors

inspiring a beautiful life

www.zohiinteriors.com.au

ONLINE DESIGNER FURNITURE & HOMEWARES

info@zohiinteriors.com.au

02 9580 2297



zohi
INTERIORS